



## OUR HEALTH PRIORITIES

Solthis currently focuses on responding to 3 health priorities:

- **infectious and emerging diseases**, in particular HIV and AIDS, tuberculosis and emerging diseases such as coronavirus disease 2019 (COVID-19) and hepatitis B.
- **sexual and reproductive health** and rights and child health; encompassing gender issues, reproductive, maternal, infant and child health.
- **operationalization of the “One Health” concept**, which links human, animal and environmental health, as well as the link between climate and health.



1

**EMERGING INFECTIOUS DISEASES**  
HIV, tuberculosis, COVID-19, hepatitis B.

2

**SEXUAL AND REPRODUCTIVE HEALTH AND RIGHTS, AND CHILD HEALTH**

3

**ONE HEALTH AND CLIMATE HEALTH**

# GLOBAL HEALTH NGO



## OUR IDENTITY

As a global health expert, the NGO Solthis emerged through the commitment of doctors at the Pitié Salpêtrière hospital to **promote access to care and, in particular, treatment for HIV and AIDS.** With 20 years of experience, Solthis is now engaged in major health issues and advocates for the respect of the right to health and access to health for all.



## OUR GUIDING PRINCIPLES

To take action without compromising the autonomy of national partners and long-term sustainability in complementarity with existing health programs.



## OUR VALUES AND COMMITMENTS

- **PROFESSIONALISM AND ACCOUNTABILITY**
- **SOLIDARITY AND COMMITMENT**
- **EQUITY AND INCLUSION**



Gender is mainstreamed in a cross-cutting way in all our projects, and in our human resources and anti-harassment and anti-discrimination policies.



[Learn more about Solthis' 2022-2025 strategy on our new website](#)



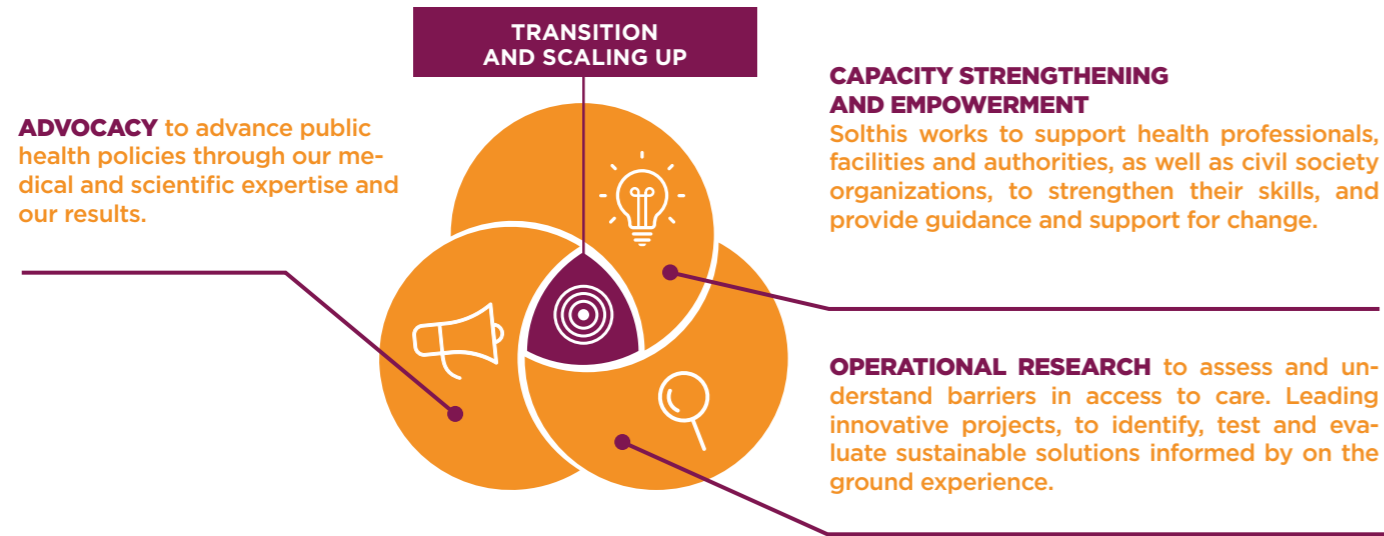
*Our organization is part of current developments in international solidarity focused on the autonomy for people and organizations in the African countries where we operate, through a localised approach to aid, strengthening the role of national actors and by taking into account the changing determinants of health, socio-economic, political and environmental crises.*

**Dr. Serge BREYSSE, Chief Executive Officer**



# HOW WE WORK

In order to respond to our intervention priorities, Solthis takes a high-impact intervention approach focused on three priority areas:



## 1. AN IMPACT MULTIPLIER APPROACH

By combining these three intervention methods, Solthis has developed an approach that has a multiplier effect, sustains the impact of its programs and ensures transition to partners and scale up of their interventions.



## 2. A PARTNERSHIP APPROACH AT THE HEART OF OUR PROJECTS



“As local as possible, as international as necessary” - we embed our interventions in national strategies and policies and support our partners based on the needs they express, remaining faithful to our principle of not taking action on behalf of others.

## 3. A HEALTH PROMOTION APPROACH TO STRENGTHEN HEALTH SYSTEMS AND COMMUNITY HEALTH

Our approach to health promotion is participatory and inclusive. Solthis works to both strengthen health systems and civil society organisations and individuals, to ensure access to more efficient quality services.

